

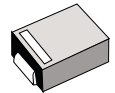
**Surface Mount  
Ultrafast Power Rectifiers**

Ideally suited for high voltage, high frequency rectification, or as free wheeling and protection diodes in surface mount applications where compact size and weight are critical to the system.

- \* Low Power Loss, High efficiency
- \* Glass Passivated chips junction
- \* 150°C Operating Junction Temperature
- \* Low Stored Charge Majority Carrier Conduction
- \* Low Forward Voltage Drop , High Current Capability
- \* High-Switching Speed 35 & 50 Nanosecond Recovery Time
- \* Small Compact Surface Mountable Package with J-Bend Lead
- \* Plastic Material used Carries Underwriters Laboratory Flammability Classification 94V-0

**ULTRA FAST  
RECTIFIERS**

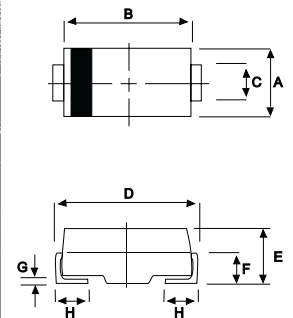
**5.0 AMPERES  
50 -- 400 VOLTS**



**DO-214AA(SMB)**

**MAXIMUM RATINGS**

Characteristic	Symbol	MU						Unit
		51	52	53	54	55	56	
Peak Repetitive Reverse Voltage Working Peak Reverse Voltage DC Blocking Voltage	$V_{RRM}$ $V_{RWM}$ $V_R$	50	100	150	200	300	400	V
RMS Reverse Voltage	$V_{R(RMS)}$	35	70	105	140	210	280	V
Average Rectifier Forward Current	$I_O$	5.0						A
Non-Repetitive Peak Surge Current ( Surge applied at rate load conditions halfwave, single phase, 60Hz )	$I_{FSM}$	100				75		A
Operating and Storage Junction Temperature Range	$T_J, T_{stg}$	- 65 to + 150						°C



DIM	MILLMETERS	
	MIN	MAX
A	3.30	3.90
B	4.20	4.60
C	1.80	2.20
D	4.90	5.60
E	1.90	2.50
F	---	1.30
G	---	0.22
H	0.85	1.45

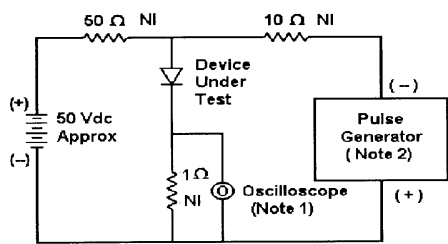
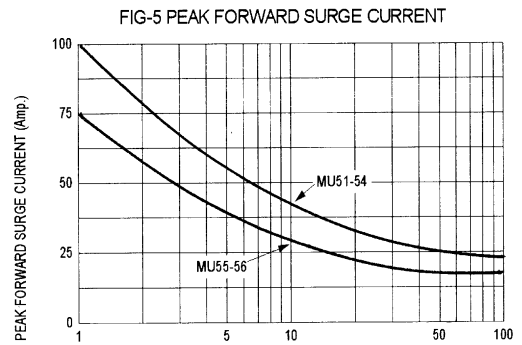
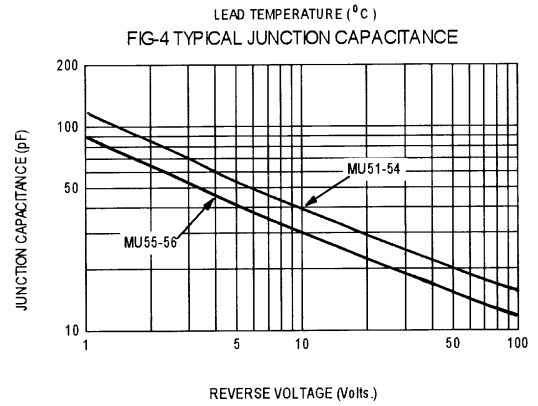
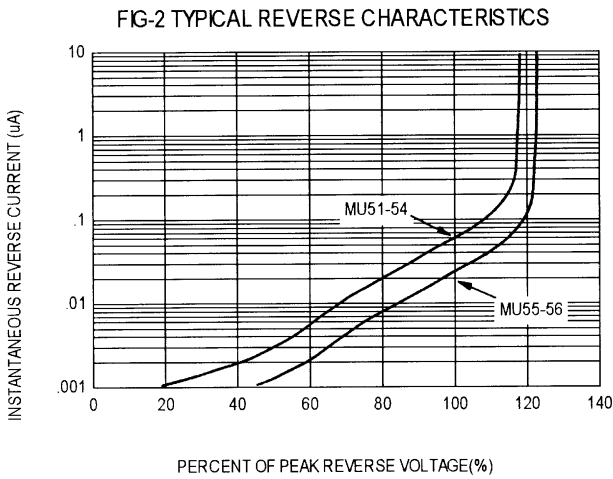
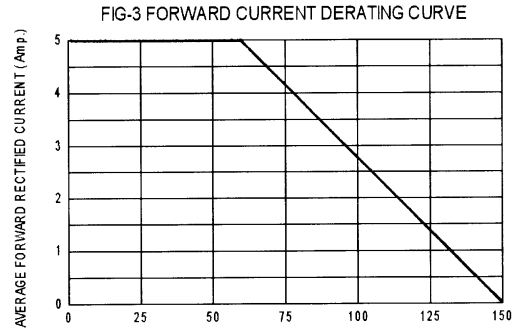
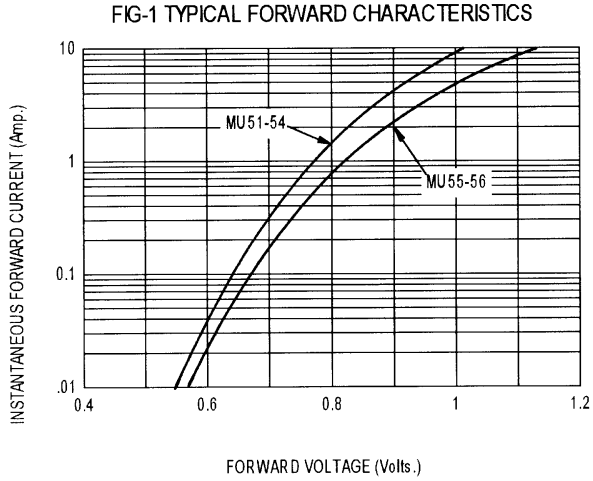
**ELECTRICAL CHARACTERISTICS**

Characteristic	Symbol	MU						Unit
		51	52	53	54	55	56	
Maximum Instantaneous Forward Voltage ( $I_F=5.0$ Amp, $T_C = 25$ °C)	$V_F$	1.00				1.30		V
Maximum Instantaneous Reverse Current ( Rated DC Voltage, $T_C = 25$ °C) ( Rated DC Voltage, $T_C = 125$ °C)	$I_R$	5.0				70		uA
Reverse Recovery Time ( $I_F = 0.5$ A, $I_R = 1.0$ , $I_{rr} = 0.25$ A )	$T_{rr}$	35				50		ns
Typical Junction Capacitance ( Reverse Voltage of 4 volts & f=1 MHz)	$C_P$	55				45		pF

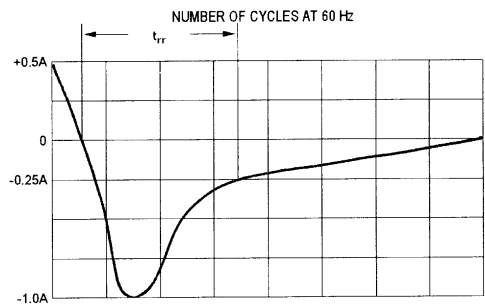
CASE---  
Transfer molded plastic

POLARITY---  
Cathode indicated polarity band

# MU51 Thru MU56



- Notes:**
1. Rise Time = 7 ns max. Input Impedance = 1 M Ω, 22 pF
  2. Rise Time = 10 ns max. Input Impedance = 50 Ω



Set time base for 10/20 ns/div

Fig-6 Reverse Recovery Time Characteristic and Test Circuit Diagram