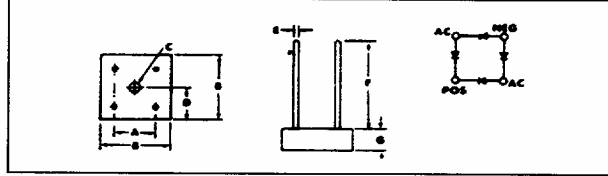


EBR 6 Amp Epoxy Bridge Rectifiers VH Series

Glass Passivated Silicon Chips
 Controlled Avalanche Series with 250V, 450V,
 650V, and 850V Minimum Avalanche Ratings
 Non-controlled Avalanche Series with 50V, 100V,
 200V, 400V, 600V, 800V, and 1000V V_{RRM} Ratings
 100 Amps Peak One Half Cycle Surge Current

LTR.	INCHES	MILLIMETERS
A	.411-.441	10.44-11.20
B	.590-.610	14.99-15.49
C	.137-.167 Dia.	3.48-4.24 Dia.
D	.295-.305	7.49-7.75
E	.037-.043 Dia.	.94-1.09 Dia.
F	1.0 Min.	25.4 Min.
G	.195-.205	4.95-5.21



MAXIMUM RATINGS (At $T_A = 25^\circ\text{C}$ unless otherwise specified)

RATINGS	SYMBOL	CONTROLLED AVALANCHE				NON-CONTROLLED AVALANCHE							UNITS
		VH247	VH447	VH647	VH847	VH048	VH148	VH248	VH448	VH648	VH848	VH1048	
Series Number		VH247	VH447	VH647	VH847	VH048	VH148	VH248	VH448	VH648	VH848	VH1048	
DC Blocking Voltage	V_{RM}	200	400	600	800	50	100	200	400	600	800	1000	Volts
Working Peak Reverse Voltage	V_{RWM}												
Peak Repetitive Reverse Voltage	V_{RRM}												
RMS Reverse Voltage	$V_{R(RMS)}$	140	280	420	560	35	70	140	280	420	560	700	Volts
Power Dissipation in $V_{(BR)}$ Region for 100 μSEC Square Wave	P_{RM}	400				NA							Watts
Continuous Power Dissipation in $V_{(BR)}$ Region at $T_{HS} = 80^\circ\text{C}$	P_R	2				NA							Watts
Fusing Data	I^2t	40											Amps ² Sec.
Peak Surge Current, 1/2 Cycle at 60 Hz, (Non-Rep) at $T_{HS} = 80^\circ\text{C}$ (Fig. 2)	I_{FSM}	100											Amps
Peak Surge Current, 1 sec. at 60 Hz and $T_{HS} = 80^\circ\text{C}$ (Fig. 2)	I_{FRM}	25											Amps
Avg. Forward Current at $T_{HS} = 80^\circ\text{C}$ (Fig. 1)	I_o	6											Amps
Junction Operating and Storage Temperature Range	T_J, T_{STG}	- 50 to + 150											$^\circ\text{C}$
Maximum soldering temperature and time		10 Sec at 265 $^\circ\text{C}$											

ELECTRICAL CHARACTERISTICS (At $T_A = 25^\circ\text{C}$ unless otherwise noted)

RATINGS	SYMBOL	CONTROLLED AVALANCHE				NON-CONTROLLED AVALANCHE							UNITS
		VH247	VH447	VH647	VH847	VH048	VH148	VH248	VH448	VH648	VH848	VH1048	
Series Number		VH247	VH447	VH647	VH847	VH048	VH148	VH248	VH448	VH648	VH848	VH1048	
Minimum Avalanche Voltage	$V_{(BR)}$	250	450	650	850	NA							Volts
Maximum Avalanche Voltage	$V_{(BR)}$	700	900	1100	1300	NA							Volts
Maximum Instantaneous Forward Voltage Drop (Per Diode) at 6 Amps (Fig. 3)	V_{FM}	1.3											Volts/Leg
Maximum Reverse Current at Rated V_{RM}	I_{RM}	5											μA
Maximum Reverse Current at Rated V_{RM} at $T_J = 125^\circ\text{C}$	I_{RM}	1.0											mA
Insulation Strength From Circuit to Case (min.)		2000											Volts DC
Thermal Resistance (Typ.) Junction to case (on heat sink)	$R_{\theta JC}$	6											$^\circ\text{C/W}$
Junction to air (no heat sink)	$R_{\theta JA}$	25											$^\circ\text{C/W}$

Part Nos. VH247, VH447, VH647, VH847, VH048, VH148, VH248, VH448, VH648, and VH848 have been recognized under the Component Program of Underwriters Laboratories, Inc.

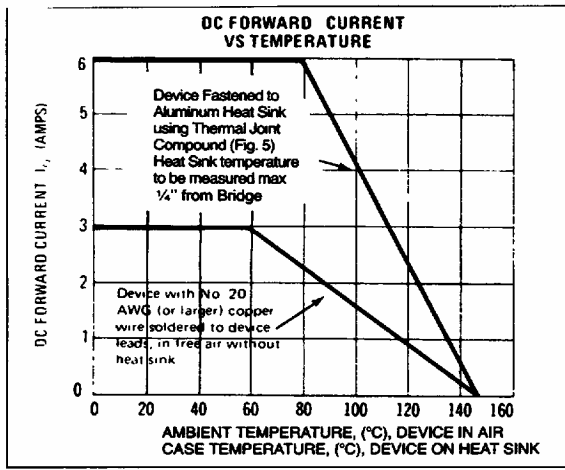


FIGURE 1

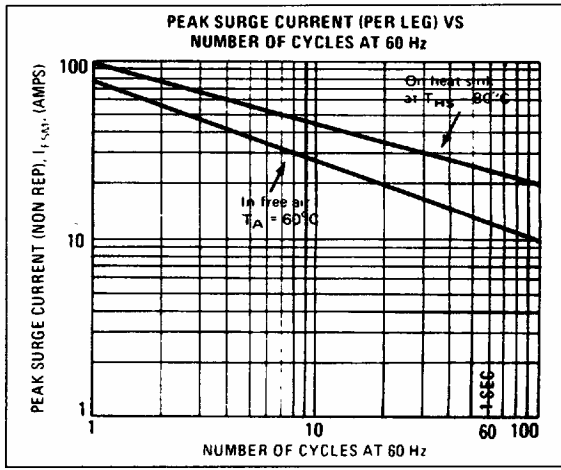


FIGURE 2

T-23-07

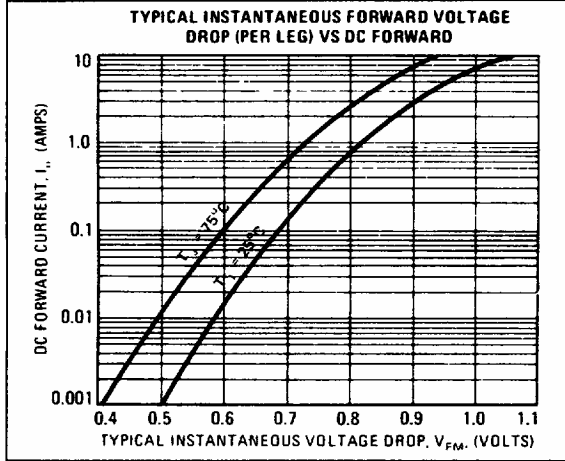


FIGURE 3

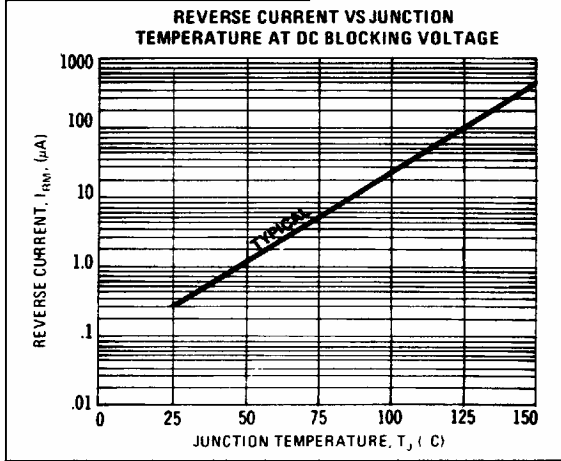


FIGURE 4

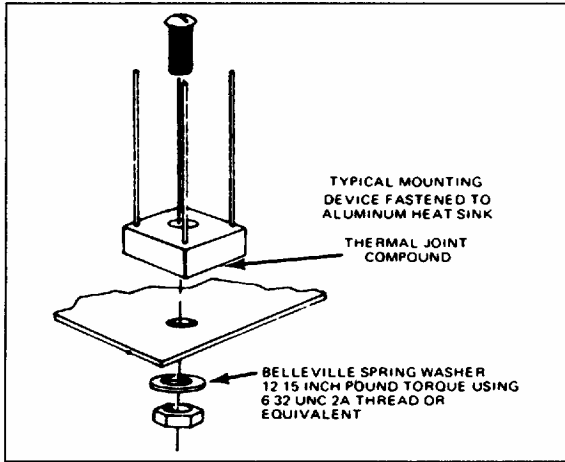


FIGURE 5

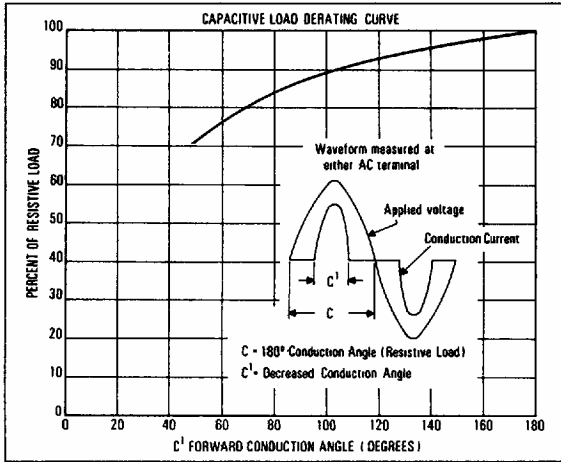


FIGURE 6