



TS20P01G THRU TS20P07G

Single Phase 20.0 AMPS. Glass Passivated Bridge Rectifiers



Voltage Range
50 to 1000 Volts
Current
20.0 Amperes

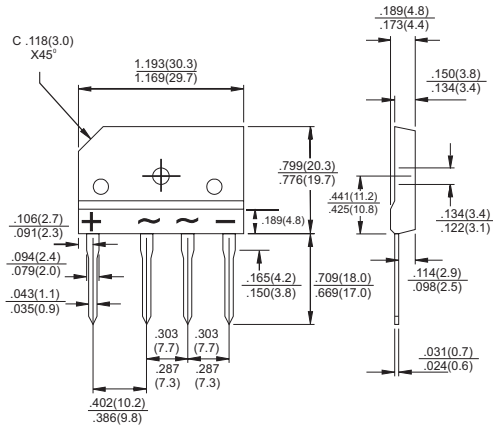
Features

- ✧ UL Recognized file # E-96005
- ✧ Glass passivated junction
- ✧ Ideal for printed circuit board
- ✧ Reliable low cost construction
- ✧ Plastic material has Underwriters Laboratory Flammability Classification 94V-0
- ✧ Surge overload rating to 250 amperes peak
- ✧ High case dielectric strength of 2000 V_{RMS}

Mechanical Data

- ✧ Case: Molded plastic
- ✧ Terminals: Leads solderable per MIL-STD-750, Method 2026
- ✧ Weight: 0.3 ounce, 8 grams
- ✧ Mounting torque: 8.17 in. lbs. max.

TS-6P



Dimensions in inches and (millimeters)

Maximum Ratings and Electrical Characteristics

Rating at 25°C ambient temperature unless otherwise specified.

Single phase, half wave, 60 Hz, resistive or inductive load.

For capacitive load, derate current by 20%

Type Number	Symbol	TS20P 01G	TS20P 02G	TS20P 03G	TS20P 04G	TS20P 05G	TS20P 06G	TS20P 07G	Units
Maximum Recurrent Peak Reverse Voltage	V _{RRM}	50	100	200	400	600	800	1000	V
Maximum RMS Voltage	V _{RMS}	35	70	140	280	420	560	700	V
Maximum DC Blocking Voltage	V _{DC}	50	100	200	400	600	800	1000	V
Maximum Average Forward Rectified Current See Fig. 1	I _(AV)	20.0							A
Peak Forward Surge Current, 8.3 ms Single Half Sine-wave Superimposed on Rated Load (JEDEC method)	I _{FSM}	250							A
Maximum Instantaneous Forward Voltage @ 20.0A	V _F	1.1							V
Maximum DC Reverse Current @ T _A =25°C at Rated DC Blocking Voltage @ T _A =125°C	I _R	10.0 500							uA uA
Typical Thermal Resistance (Note)	R _{θJC}	0.8							°C/W
Operating Temperature Range	T _J	-55 to +150							°C
Storage Temperature Range	T _{STG}	-55 to + 150							°C

Note: Thermal Resistance from Junction to Case with Device Mounted on 5" x 7" x 0.25" Al-Plate Heatsink.

RATINGS AND CHARACTERISTIC CURVES (TS20P01G THRU TS20P07G)

FIG.1- MAXIMUM FORWARD CURRENT DERATING CURVE

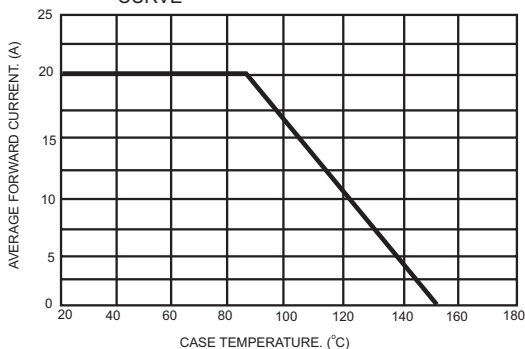


FIG.2- MAXIMUM NON-REPETITIVE FORWARD SURGE CURRENT PER BRIDGE ELEMENT

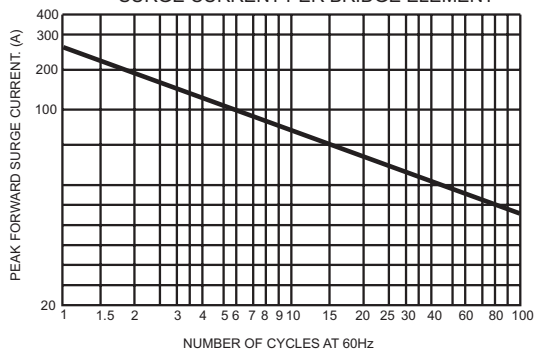


FIG.3- TYPICAL REVERSE CHARACTERISTICS PER BRIDGE ELEMENT

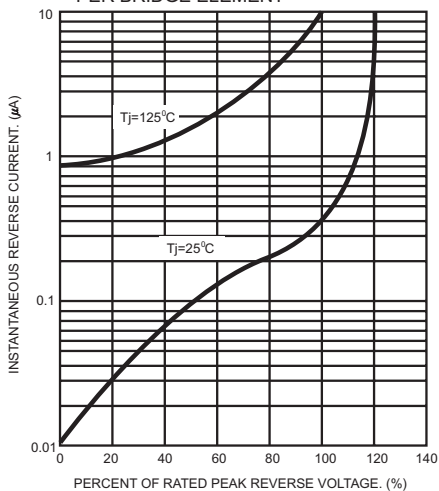


FIG.4- TYPICAL FORWARD CHARACTERISTICS PER BRIDGE ELEMENT

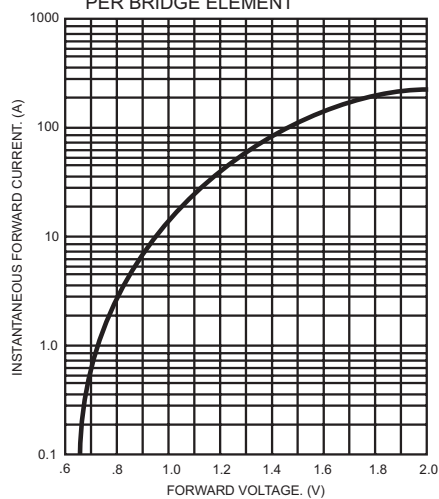


FIG.5- TYPICAL TRANSIENT THERMAL IMPEDANCE

